

COPY

24-K-163  
I certify that the within instrument is duly entered and Registered in the Land Titles Office for the North Alberta Land Registration District at Edmonton, in the Province of Alberta at 10:21 o'clock A.M. on the 19 day of March A.D. 1957, Number 2683.  
Book K.S. Folio 93  
R. S. Bundal A.D. Registrar N.A.L.T.D.

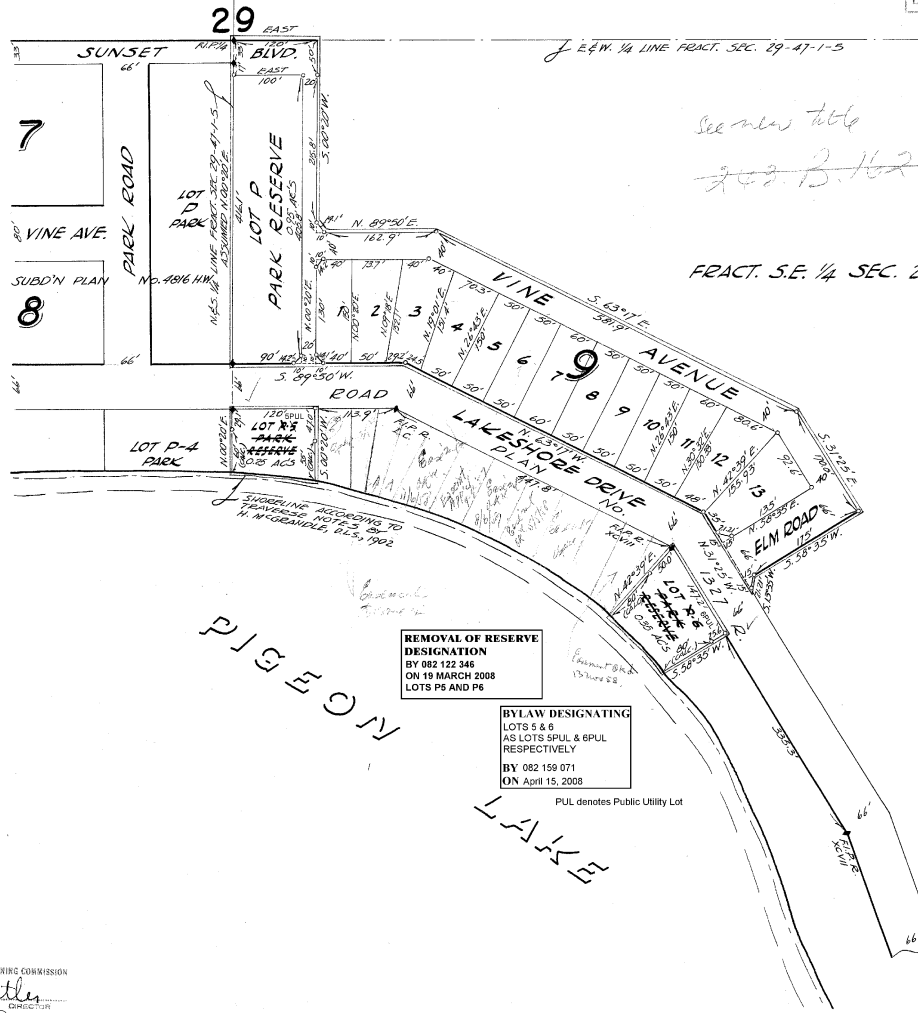
APPROVED subject to registration on or before Mar. 29 1957  
*W. H. ...*  
DIRECTOR OF SURVEYS  
Edmonton Feb. 19 1957

GOV'T ROAD ALLOWANCE  
66'

**PLAN**  
SHOWING SUBDIVISION OF  
A PORTION OF THE  
FRACT. S.E. 1/4 SEC. 29-TR. 47-R. 1-W. 5<sup>th</sup> MER.  
PIGEON LAKE  
SUNDANCE BEACH  
ALBERTA

SCALE: 1 INCH = 100 FEET

NOTES: PORTIONS TO BE REGISTERED OUTLINED IN RED, AND CONTAINS BLUE IRON SURVEY POSTS FOUND SHOWN THUS ... IRON SURVEY POSTS PLANTED SHOWN THUS ... DISTANCES ARE IN FEET AND DECIMALS OF A FOOT. 3/8" x 30" IRON BARS ARE PLANTED AT LOT CORNERS.



See new title  
202 B. 162

FRACT. S.E. 1/4 SEC. 29-47-1-5

I, LAWRENCE O. OLSEN, OF THE CITY OF EDMONTON, ALBERTA LAND SURVEYOR, HEREBY CERTIFY THAT THE SURVEY REPRESENTED BY THIS PLAN HAS BEEN MADE BY ME OR UNDER MY SUPERVISION AND THAT THE IRON SURVEY POSTS FOUND SHOWN THUS ... IRON SURVEY POSTS PLANTED SHOWN THUS ... DISTANCES ARE IN FEET AND DECIMALS OF A FOOT. 3/8" x 30" IRON BARS ARE PLANTED AT LOT CORNERS.  
*Lawrence O. Olsen*  
ALBERTA LAND SURVEYOR

I, SOLENE V. NYSTROM, OF THE CITY OF EDMONTON IN THE PROVINCE OF ALBERTA, HEREBY CERTIFY THAT THE SURVEY REPRESENTED BY THIS PLAN HAS BEEN MADE BY ME OR UNDER MY SUPERVISION AND THAT THE IRON SURVEY POSTS FOUND SHOWN THUS ... IRON SURVEY POSTS PLANTED SHOWN THUS ... DISTANCES ARE IN FEET AND DECIMALS OF A FOOT. 3/8" x 30" IRON BARS ARE PLANTED AT LOT CORNERS.  
*Solene V. Nyström*  
WITNESS

APPROVED BY  
EDMONTON WATER PLANNING COMMISSION  
*J. G. ...*  
DIRECTOR  
DATE: Feb 7 1957  
56-46

REMOVAL OF RESERVE  
DESIGNATION  
BY 082 122 346  
ON 19 MARCH 2008  
LOTS P5 AND P6

BYLAW DESIGNATING  
LOTS 5 & 6  
AS LOTS SPUL & 6PUL  
RESPECTIVELY  
BY 082 159 071  
ON April 15, 2008

PUL denotes Public Utility Lot

OWNERS:  
*John House*  
*John House*  
LAWFUL ATTORNEY FOR ZELDA MAY HOUSE

No Crown Land included in this survey.  
Dated this 25 day of Feb 1957  
*W. H. ...*  
Director, Technical Division  
Dept. of Lands and Forests

APPROVED FEB 8 1957  
PROVINCIAL PLANNING ADVISORY BOARD  
*W. H. ...*  
DIRECTOR

H.40.B.5-3